

Recording the conference

11th December 2024 h. 10-12 (CET)

Welcome to MERSE!

What is needed to make it easier to start and develop sustainable social enterprises in rural areas?



The Aran Islands Co-op Recycling Project, Ireland

Business Models Empowering Rural Social Enterprises – Voicing the rural norm (2023-2026)

Interreg



Co-funded by
the European Union

Northern Periphery and Arctic

MERSE

REGION
JÄMTLAND
HÄRJEDALEN



Region
Västernorrland

18 Partners + 12 Social enterprises
Finland, Iceland, Ireland, Norway and Sweden

PURPOSE:
To make it easier
to start and
develop social
enterprises in rural
NPA areas.

Interreg



Co-funded by
the European Union

Northern Periphery and Arctic

MERSE





WP1 (2023-2024)
**Mapping the conditions
 for SE in 5 countries in
 NPA rural areas**

Interreg



Co-funded by
 the European Union

Northern Periphery and Arctic

WP2 (2024-2025)
**Support structure for
 SE**



Netagerðin, Iceland

WP3 (2025-2026)
Road map



**Make it easier
 for people to
 start and
 develop
 social
 enterprises in
 NPA's rural
 areas.**

Social Enterprises
 Facilitator programme

MERSE

Today's Agenda h. 10-12 (CET)

1. Welcome!
2. Rurality and SE: **Lucas Olmedo**, University of Almería, Spain
3. The conditions for Social Enterprises in 5 countries- results from mapping
4. Break – 10 min
5. Social Enterprise: **Tiia Muotkavaara**, Pohjoisesta luonnosta Oy, Finland
6. Support Organisation: **Ia Poikulainen**, ARVO, Finland
7. Municipality perspective: **Jon Söder**, Östersund municipality, Sweden
8. Breakout rooms by country
9. Report from the breakout
10. The end

Interreg



Co-funded by
the European Union

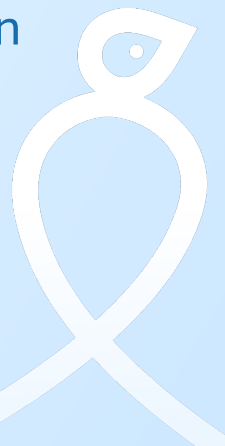
Northern Periphery and Arctic

MERSE

REGION
JÄMTLAND
HÄRJEDALEN



Region
Västernorrland



Welcome!

MERSE website:

<https://www.interregnpa.eu/projects/merse/home/>

Interreg



Co-funded by
the European Union

Northern Periphery and Arctic

MERSE

REGION
JÄMTLAND
HÄRJEDALEN



Region
Västernorrland

