

Oats in Iceland

OAT FRONTIERS WORKSHOP MEETING, HRANNAR SMÁRI HILMARSSON

2025 STEINKJER

NORWAY

Interreg

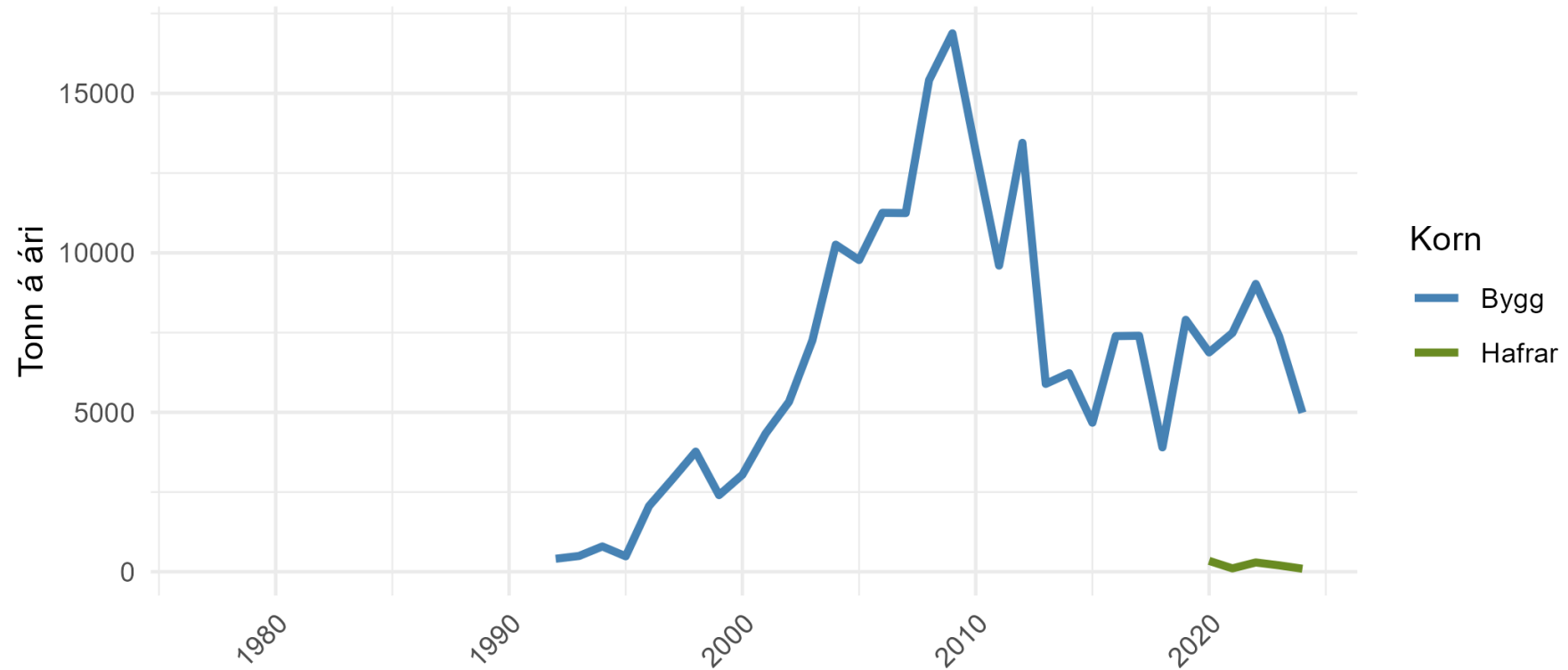


Co-funded by
the European Union

Northern Periphery and Arctic

OatFrontiers

Cereals in Iceland



First oat trials

205

627. Hafraafbrigði.

Tilraunastöð Ræktunarfélags Norðurlands á Akureyri 1935-1937 (3 ár).
Beierhafrar voru ekki með árið 1936. Uppskera hkg/ha

<u>Afbrigði af höfrum</u>	<u>Korn</u>	<u>Hálmur</u>	<u>Fóðureiningar</u>
Niðar	13,7	48,2	2343
Tenna	13,5	33,5	1995
Voll	10,3	38,8	1832
Beiar	14,0	51,8	2461

Ársrit Ræktunarfélags Norðurlands 45.-46. árg. 1948-1949, bls. 96.

628. Hafraafbrigði.

Sámsstaðir 1946-1950 (4 ár, 1947 féll úr vegna slæms veðurfars).
Áburður kg/ha: 200 kalksaltpétur, 300 superfosfór, 100 kalíáburður.

	<u>Niðar</u>	<u>Svalöf Orion</u>	<u>Svalöf Same</u>	<u>Amerískir hafrar Ajax</u>
Korn hkg/ha	15,0	15,7	15,5	17,3
Hálmur hkg/ha	42,6	39,8	42,9	48,9
Meðalsprettutími, dagar	139	139	140	142
Grómagm %	71,9	58,6	76,0	59,3
Þyngd 1000 korna, g	32,1	31,5	39,5	30,1
Fjöldi tilraunaára	4	3	4	3

Meðaltöl eru ekki leiðrétt fyrir mismunandi fjölda ára.



Oats revisited 21st century



Hafrar, hkg þe./ha

Yrki/staður	Þor	Vin	Kmel	Mið	Meðaltal
1. Sanna	42,9	32,5	36,2	16,7	32,1
2. Cilla	35,6	42,2	32,5	16,7	31,8
3. Nk96116	36,3	35,2	24,9	16,1	28,1
4. Aslak	34,6	31,7	29,3	16,4	28,0
5. Svala	35,6	34,9	24,7	13,5	27,1
6. Nk98008	31,5	30,4	28,1	16,7	26,7
7. Aarre	29,1	29,0	24,5	15,0	24,4
Meðaltal	35,1	33,7	28,6	15,9	28,3
Staðalfrávik	2,74	2,46	4,51	4,33	
Fritölur hvarvetna 12					

Þroski

Yrki	Þúsund korn, g	Rúmpýngd, g/100ml	Þurrefni, %	Þroska-einkunn	Skrið á Korpu í júlí
1. Nk96116	34	46	53	133	22
2. Cilla	31	46	54	131	21
3. Aslak	28	45	56	128	22
4. Nk98008	31	43	53	126	22
5. Svala	30	45	52	126	22
6. Aarre	29	43	53	125	21
7. Sanna	27	43	50	120	23



Recent projects

Oats in trials consecutively since 2017

Late maturing

Stronger straw – can stand longer into the autumn

Prone to lodging

Less fertilizer requirement

Lower yield

Like poor soils

The oat Farmer





Challenges for oat cultivation in Iceland

Instability

In 2024 the yield was about 2.5t/ha and the test weight was very low

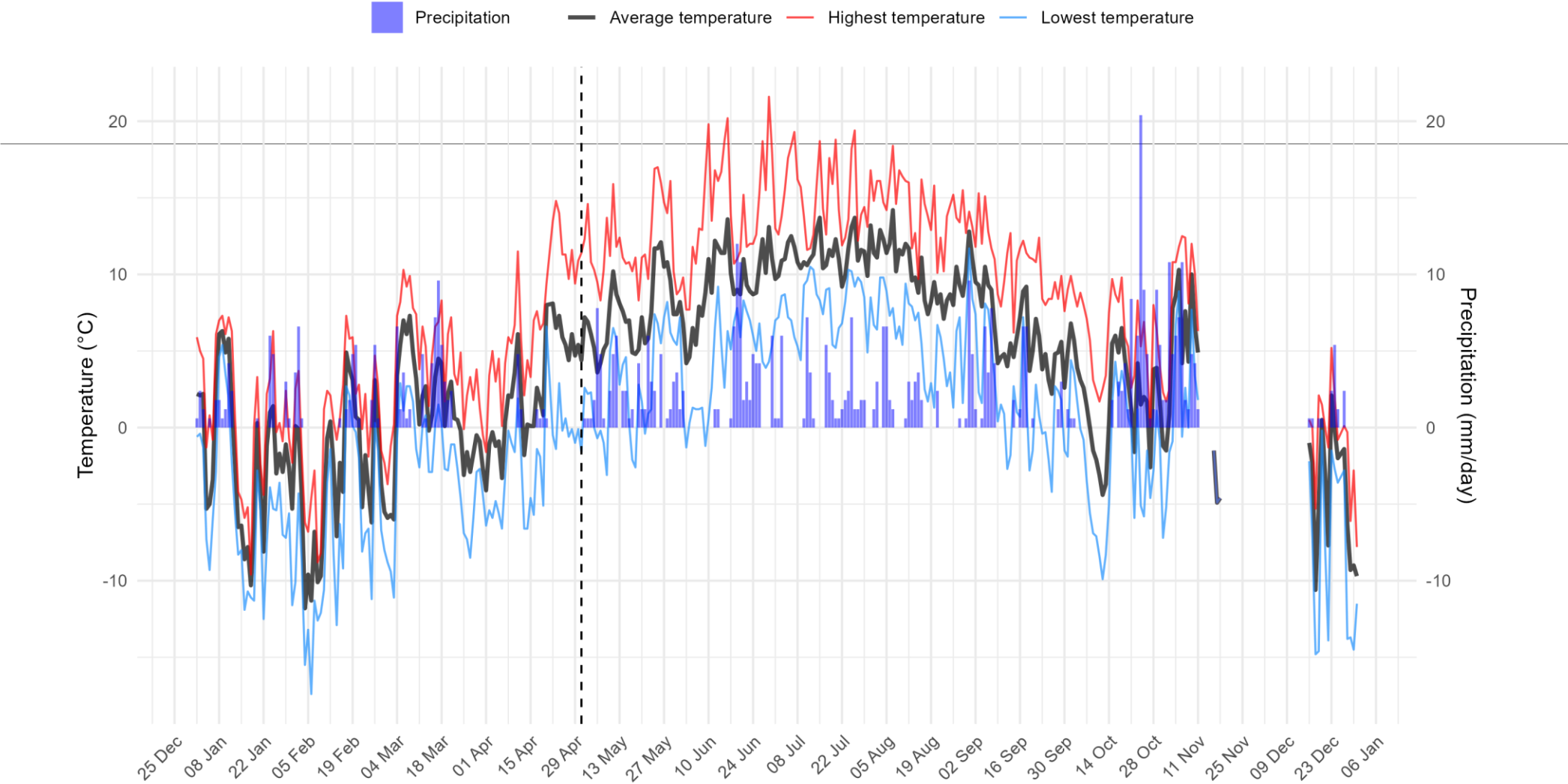
In 2025 the yield is looking like about 6-7t/ha and the test weight reaching 600g/L

No diseases and low weed pressure

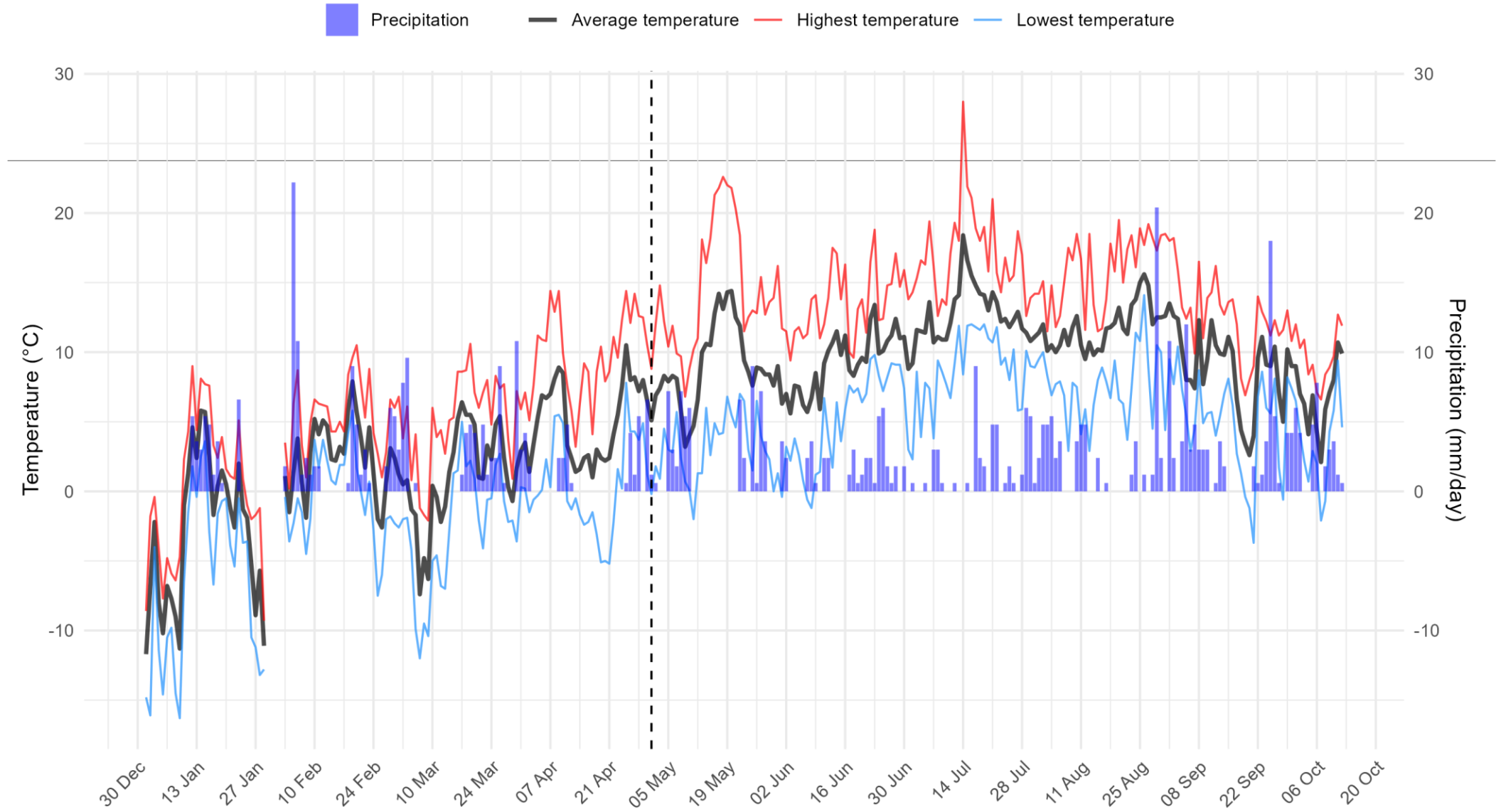
Trials in 2024 and 2025 in Iceland can help solve these challenges

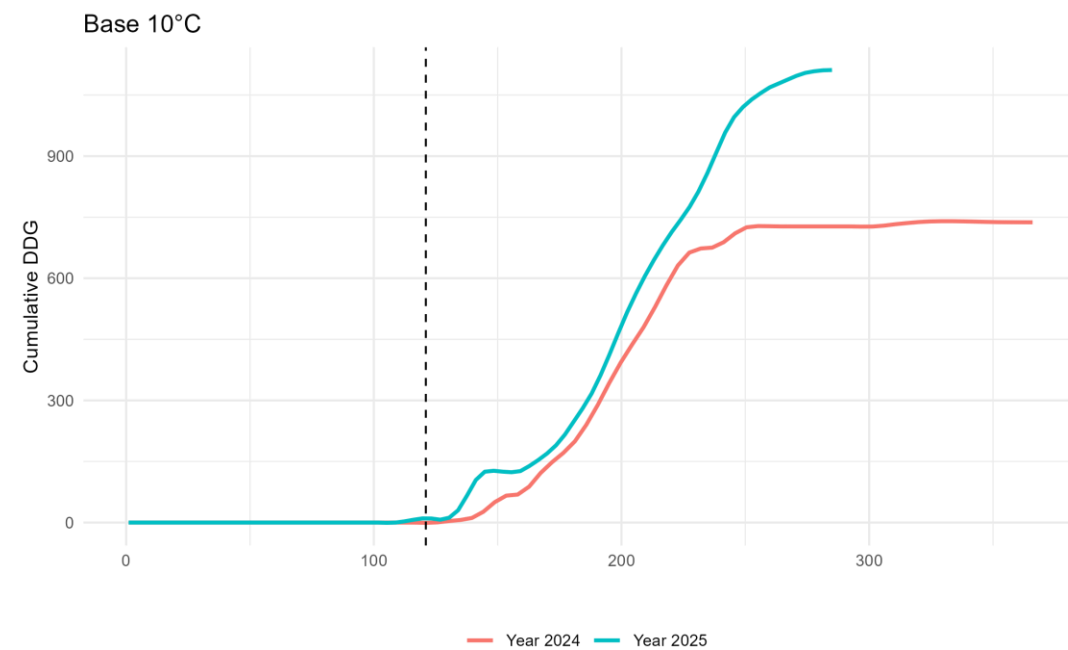
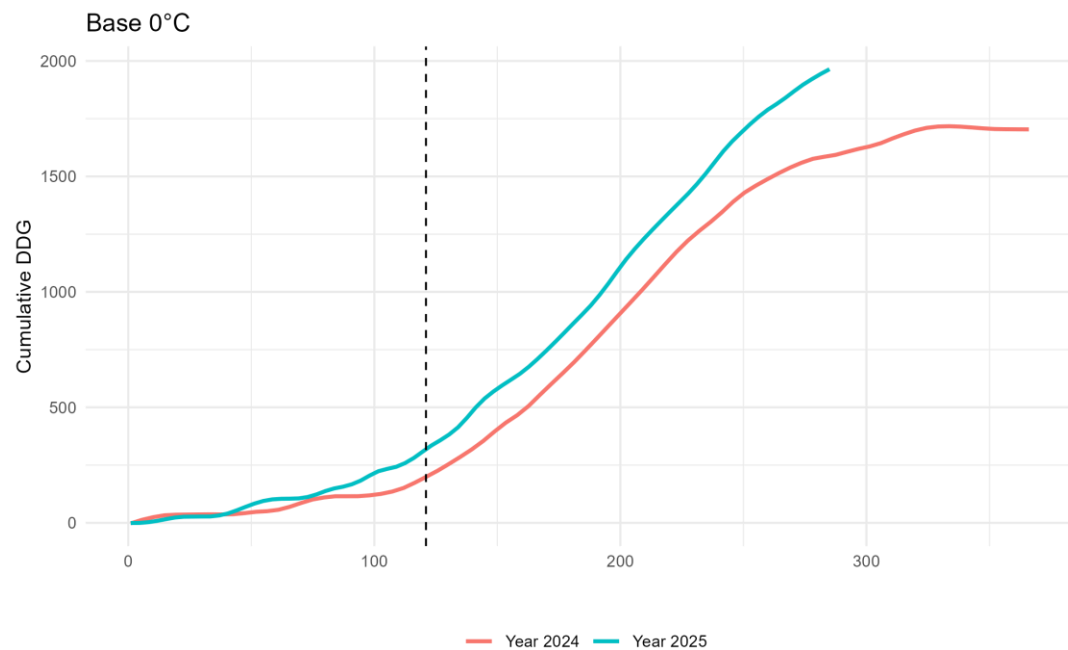
Around 30-40 oat varieties tested in south-west Iceland

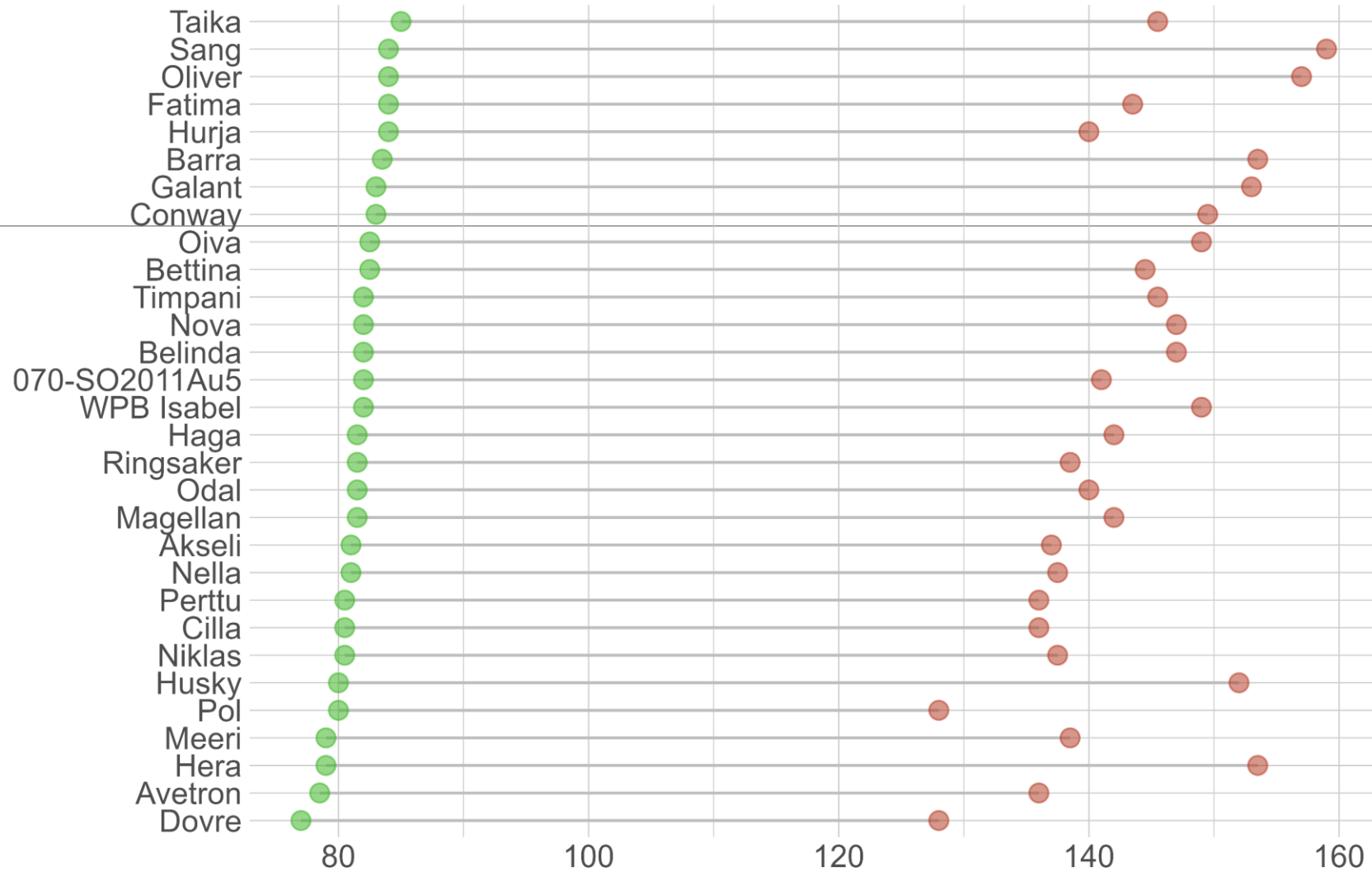
Gunnarsholt 2024



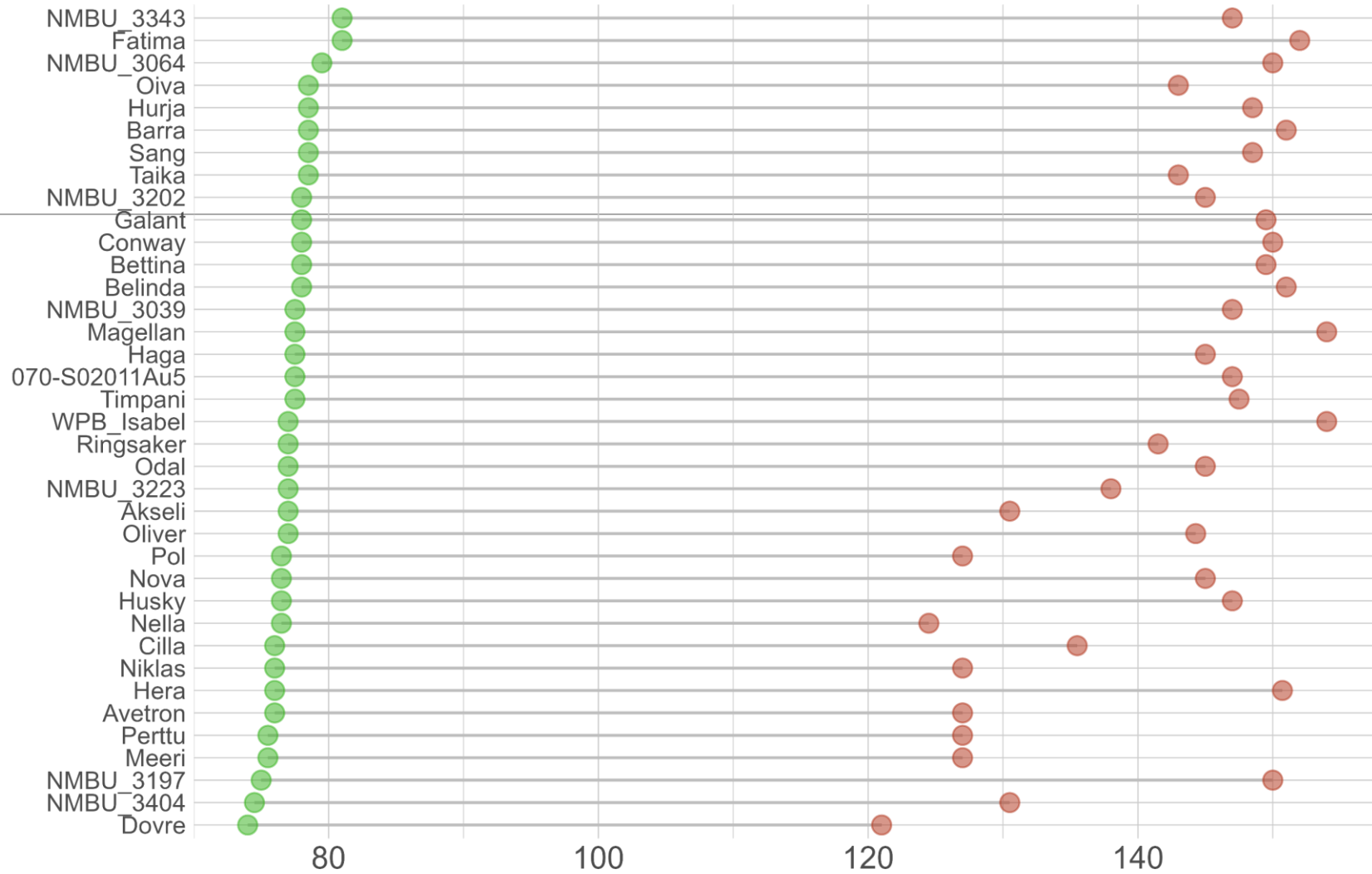
Gunnarsholt 2025



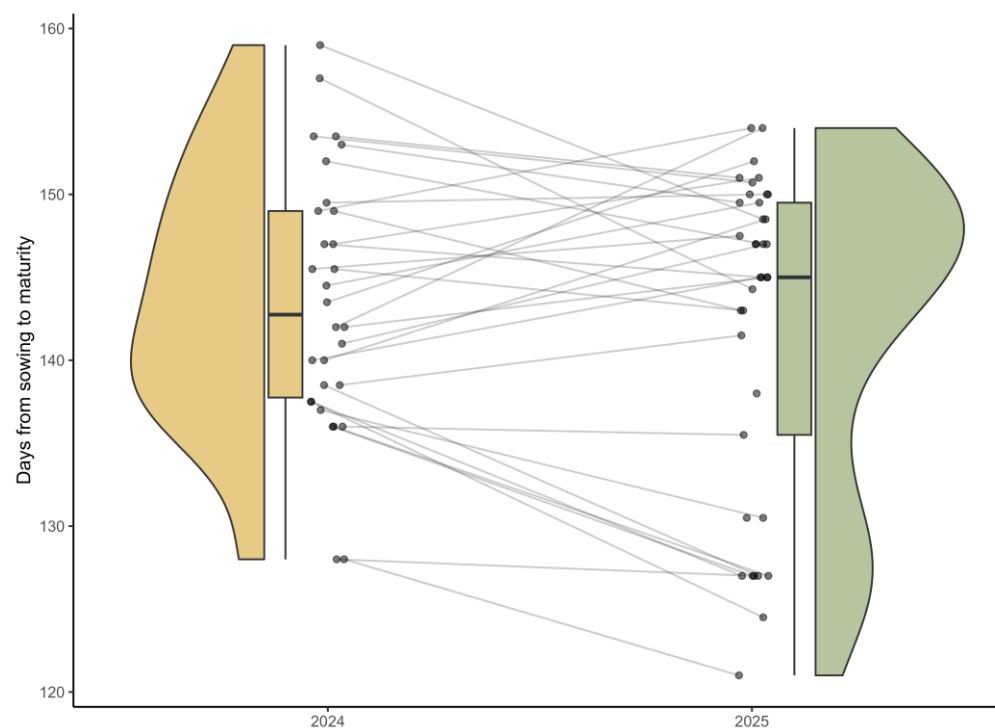
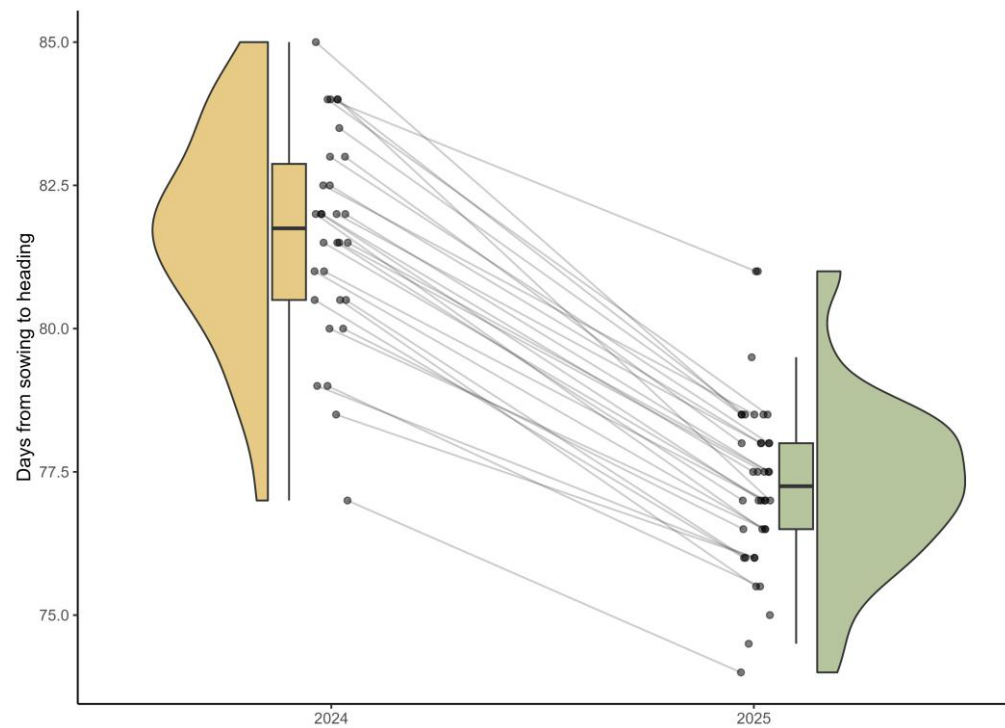




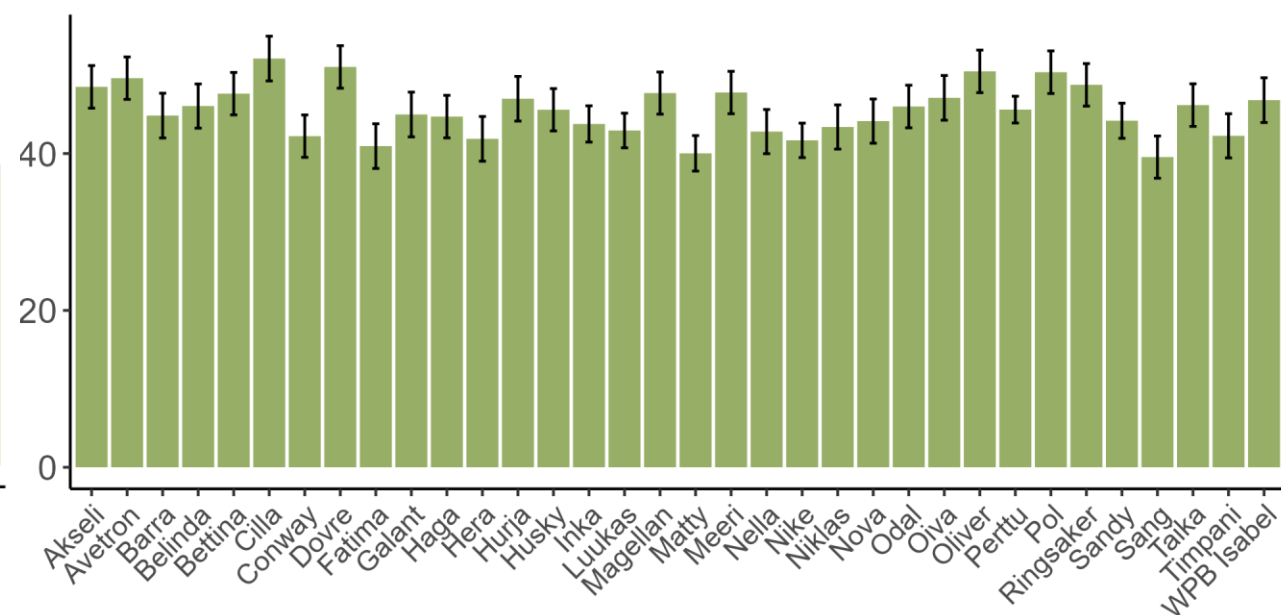
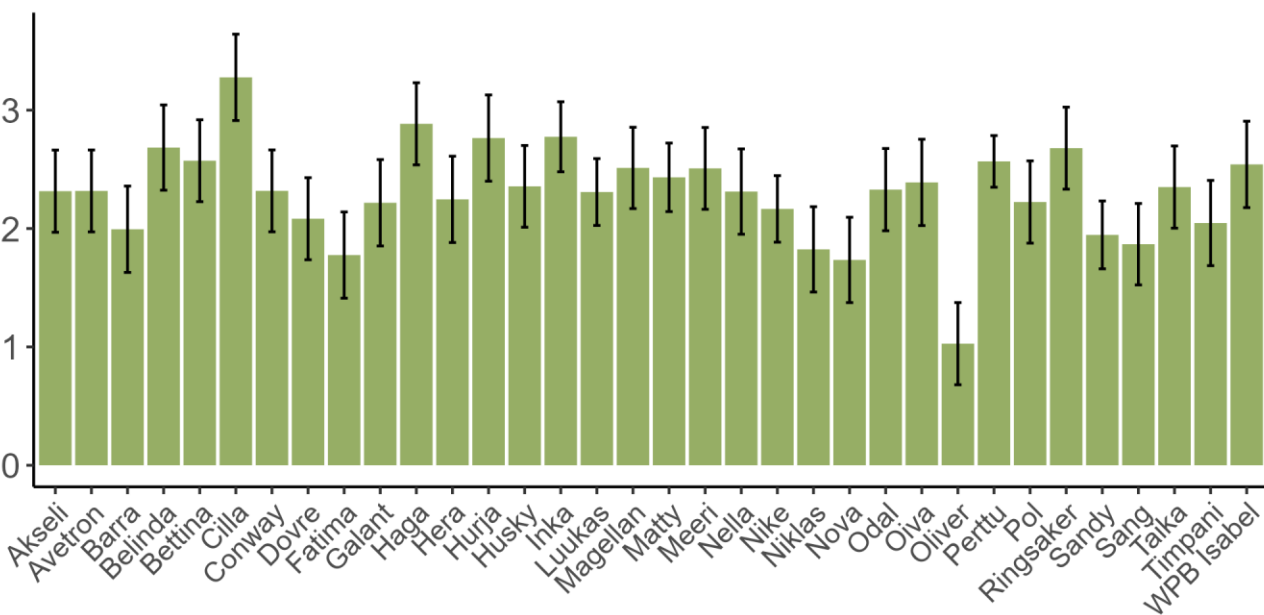
● Days from sowing to heading ● Days from sowing to maturity



● Days from sowing to heading ● Days from sowing to maturity



Results in 2024





Maturity of oats



When you
tell barley
farmers
about oat
yield



Kærar
þakkir
